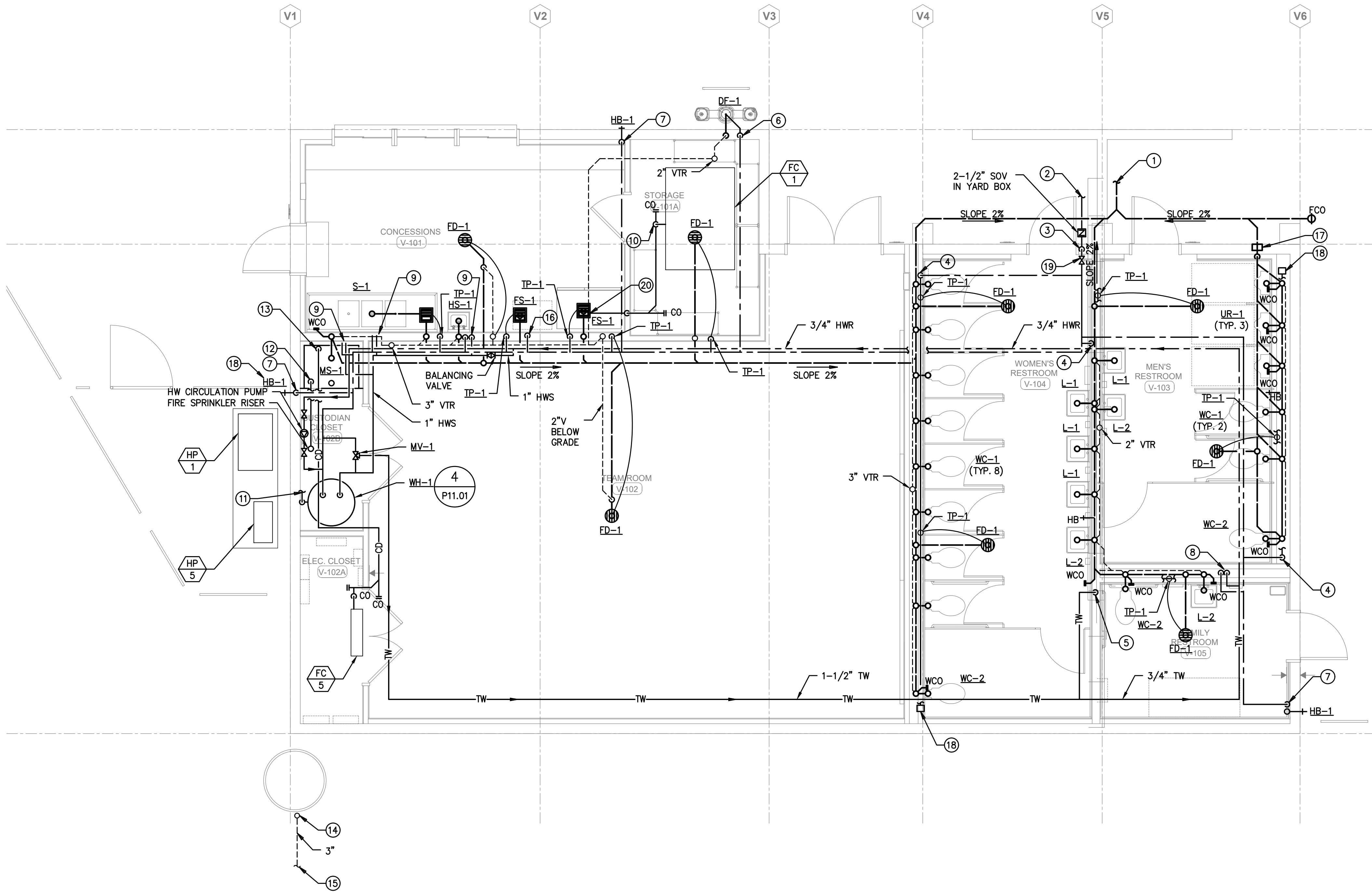


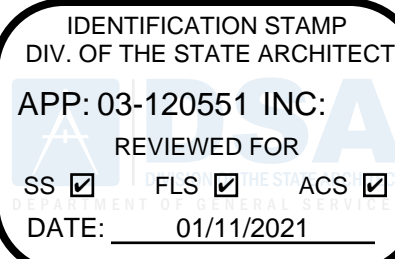
SHEET NOTES

- ① 4" WASTE, CONNECT TO 4" EXISTING PIPE 5'-0" FROM EXTERIOR WALL OF BUILDING. FOR CONTINUATION REFER TO CIVIL DRAWING SHEET C5.01
- ② 2 1/2" CW, CONNECT TO 3" EXISTING PIPE 5'-0" FROM EXTERIOR WALL OF BUILDING. FOR CONTINUATION REFER TO CIVIL DRAWING SHEET C5.01.
- ③ 2 1/2" CW UP OFFSET AS HIGH AS POSSIBLE.
- ④ 2 1/2" CW DN, IN PLUMBING CHASE TO HEADER RUN 1 1/2" CW TO EACH WATER CLOSET, 1 1/2" TO EACH URINAL, 3/4" CW TO EACH HOSE BIBB AT 22" AFF, AND 1/2" TO EACH TRAP PRIMER. PROVIDE SOV AND ACCESS PANEL. PROVIDE WATER HAMMER ARRESTOR AT THE END OF LINE. PROVIDE SOV AND ACCESS PANEL.
- ⑤ 1-1/2" TW DN, IN WALL RUN 1-1/2" HW TO EACH WC AND 3/4" TW TO LAVATORY.
- ⑥ 3/4" CW DN, IN WALL TO SERVE DRINKING FOUNTAIN AND WATER BOTTLE FILLER.
- ⑦ 3/4" COLD WATER DN, IN WALL TO HOSE BIBB.
- ⑧ 1-1/2" CW AND 3/4" TW DN IN WALL WITH 3/4" TW TO LAV AND 1-1/2" CW TO WC.
- ⑨ 3/4" CW & HW DN IN WALL TO SERVE SINK.
- ⑩ 3/4" CONDENSATE DRAIN. REFER TO DETAIL 7/P11.01
- ⑪ 3/4" TEMPERATURE/PRESSURE RELIEF DRAIN SPILL INTO MOP SINK WITH 2" AIR GAP.
- ⑫ 2" SPRINKLER DRAIN SPILL INTO MOP SINK WITH 2" AIR GAP.
- ⑬ 3/4" CONDENSATE DN, TO MOP SINK WITH 2" AIR GAP.
- ⑭ 3" ROOF DRAIN DN FROM ROOF. RUN DN, BELOW GRADE. REFER TO ARCHITECTURAL FOR LOCATION.
- ⑮ 3" ROOF DRAIN -24" INVERT ELEVATION. TERMINATE 5'-0". FROM BUILDING. FOR CONT. SEE CIVIL DRWG.
- ⑯ 1" CW DN TO ICE MAKER.
- ⑰ PROVIDE P-TRAP AND SOV WITH ACCESS PANEL.
- ⑱ WATER HAMMER ARRESTOR WITH ACCESS PANEL.
- ⑲ INSTALL BACKFLOW PREVENTER DEVICE. INSTALL 4'-0" ABOVE FINISHED FLOOR, ROUTE TO MOP SINK AND DRAIN TO MOP SINK.
- ⑳ 3/4" CONDENSATE DRAIN DN TO FLOOR SINK W/ 2" AIR GAP.

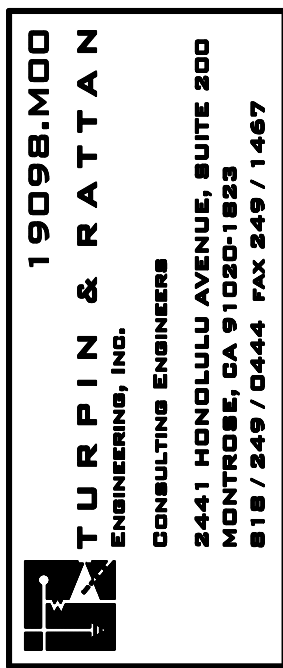


BUILDING "V" FLOOR PLAN - PLUMBING

SCALE: 1/4" = 1'-0"



REVISIONS



NORWALK LA MIRADA UNIFIED SCHOOL DISTRICT
LA MIRADA HIGH SCHOOL NEW FOOTBALL
STADIUM PROJECT
13520 ADELFA DRIVE, LA MIRADA, CA 90638

DSA # 03-120551

NAC
ARCHITECTURE

NAC NO. 161-19015
DATE 12/10/2020

DSA BACKCHECK
SUBMISSION

FLOOR PLANS
BUILDING "V" -
PLUMBING

P7.01